

ECE 4220 Analog IC Design

Access to ECE Guacamole

Author: Jinhua Wang

Guacamole

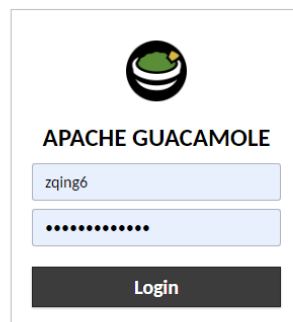
Guacamole is a web browser interface to the ECElinux/Unix machines, providing a way of using ECE Linux/Unix machines remotely without having to install any software. Guacamole can be accessed anywhere on- or off-campus without using VT's VPN, and most importantly, your connection to the ECE server remains online even the web browser is closed or the internet connection is disconnected.

Create Your ECE Account

1. Open a web browser, and enter <https://computing.ece.vt.edu/accounts;>
2. Log in with your **VT PID**;
3. Click **ECE Services** under the Contents;
4. Click **Manage ECE Accounts**;
5. Enter **Your ECE account and password**;
6. Click **New**;
7. Fill in the blank fields and click **Create ECE Account!**

Access to ECEGuacamole

1. Open a web browser, and enter <ssh.ece.vt.edu>;
2. Scroll all the way down to the bottom of the page;
3. Click **here** under the Let's get going;
4. Login with your ECE account and password.



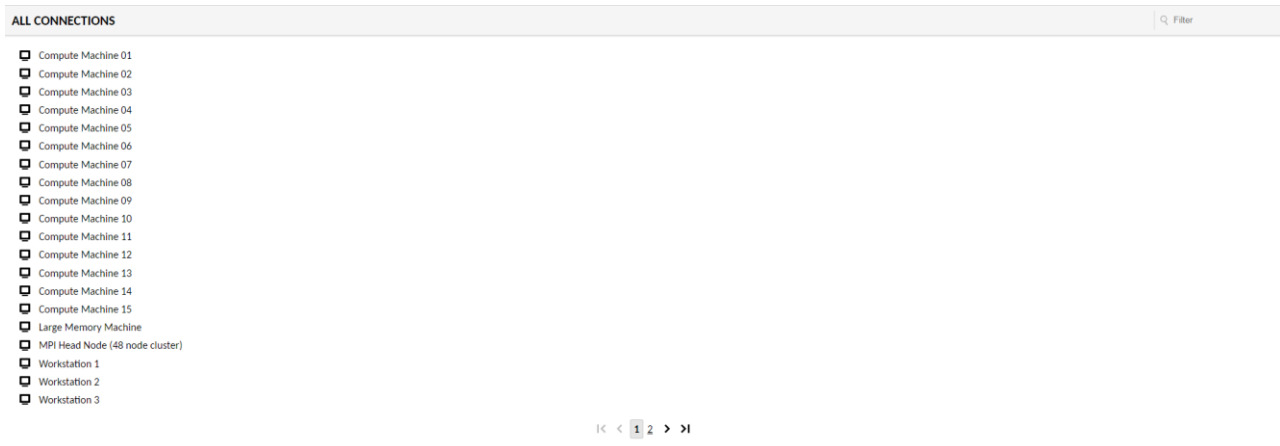
APACHE GUACAMOLE

zqing6

.....

Login

5. Pick a machine from the list.



6. You should see the desktop.



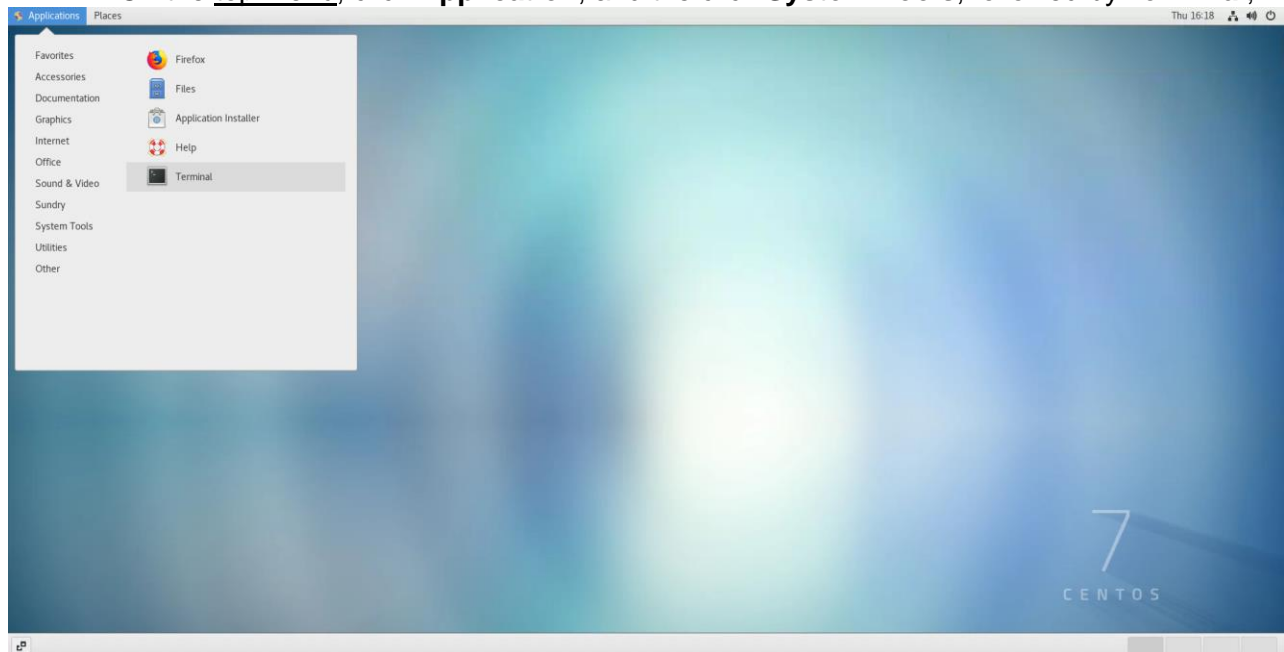
==== note =====

Please use either "**Workstation #**", where "**#**" can be "**1**" to "**6**", or "**Compute Machine #**", where "**#**" can be "**01**" to "**15**".

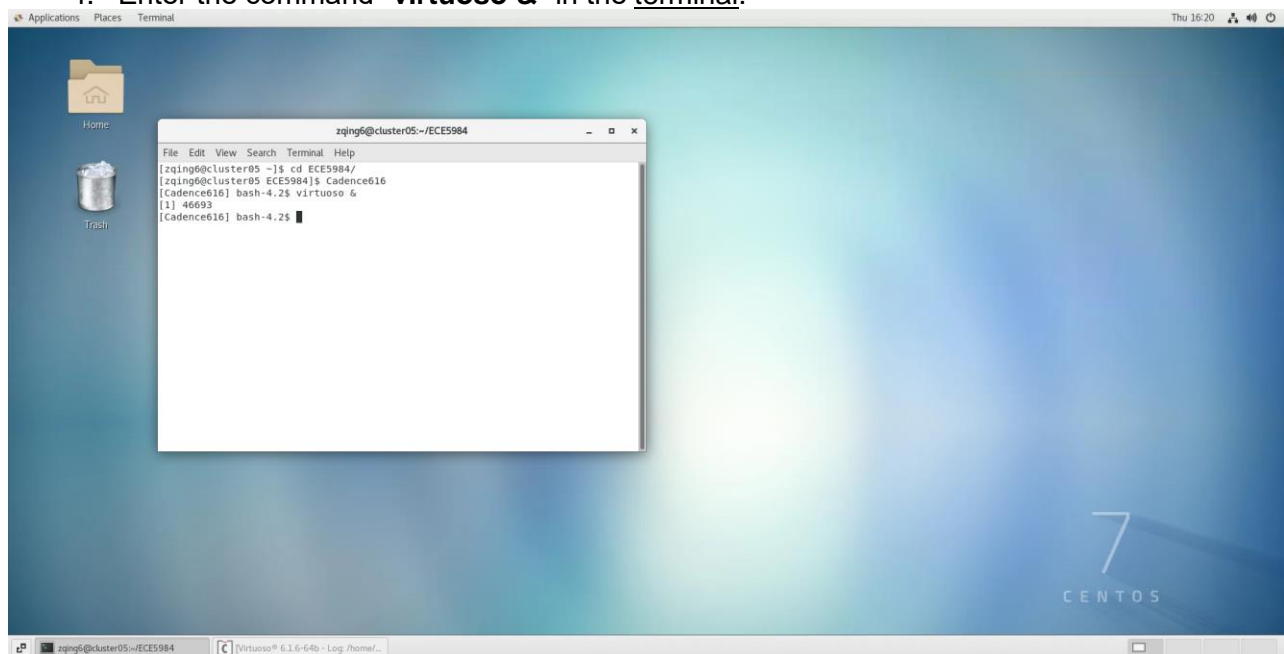
==== end =====

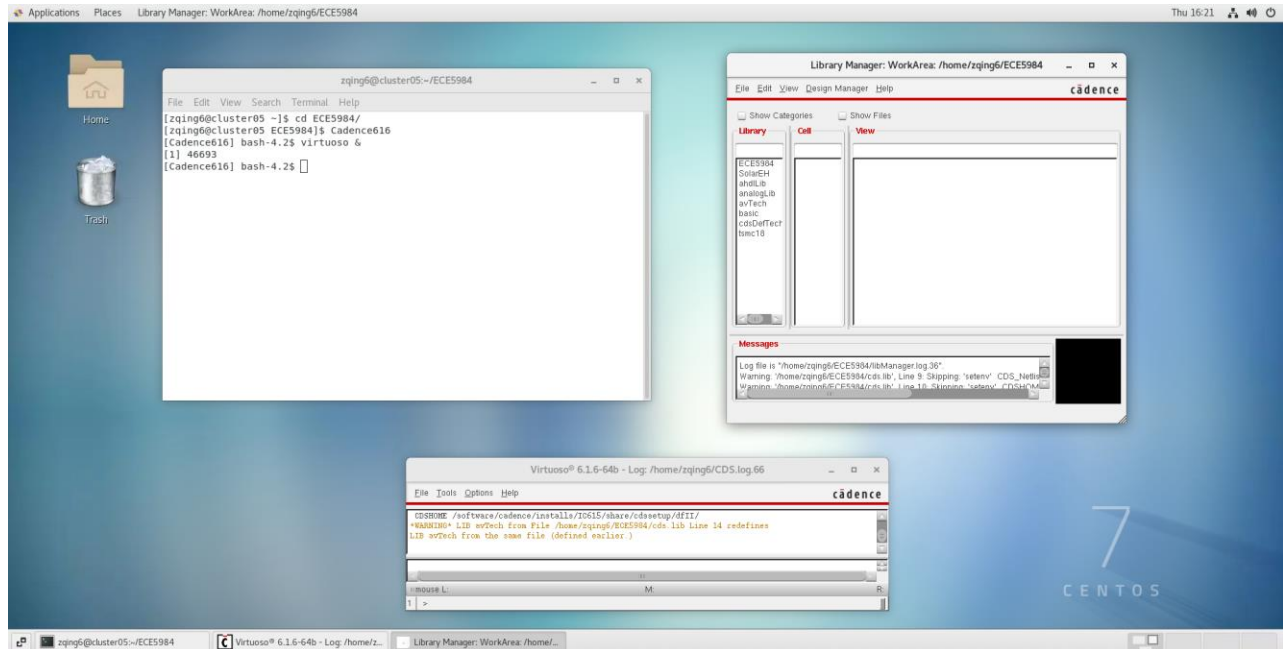
Access to Cadence Virtuoso Environment

1. On the top menu, click **Application**, and the click **System Tools**, followed by **Terminal**;



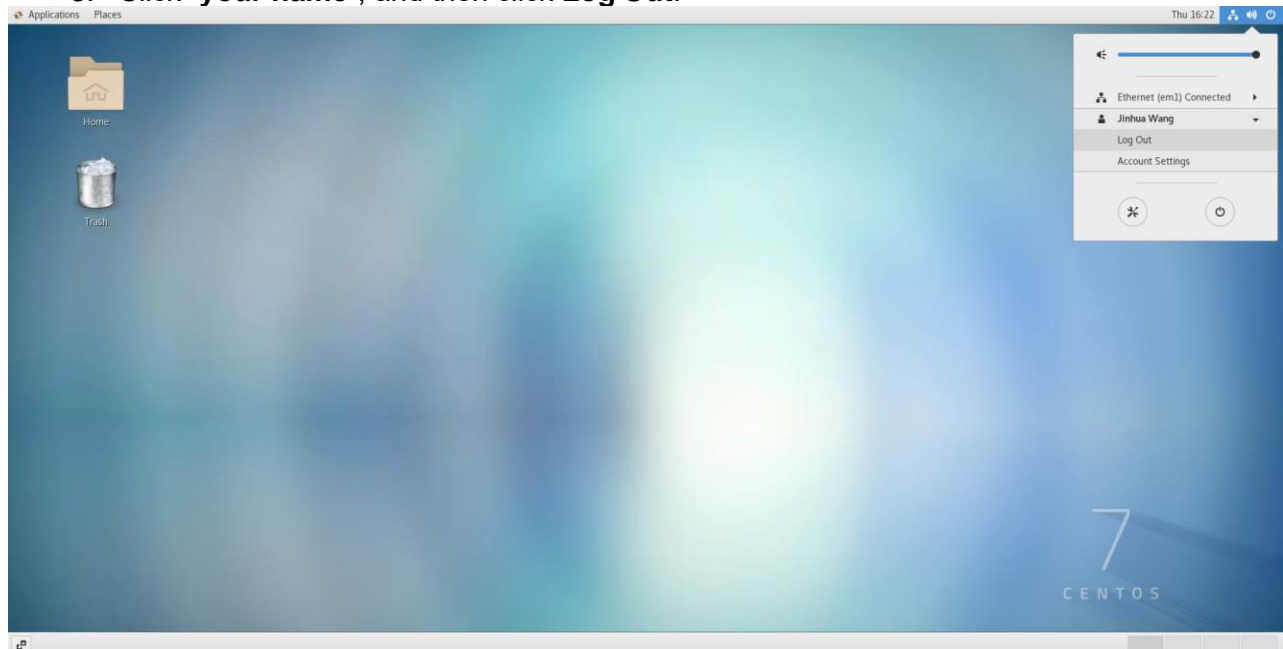
2. Enter the command "**cd name_of_your_working_directory**" in the terminal;
3. Enter the command "**Cadence616**" in the terminal;
4. Enter the command "**virtuoso &**" in the terminal.





Logout from Guacamole

1. Close all Cadence windows;
2. On the top menu, click the **power icon** located on the top-right corner;
3. Click **"your name"**, and then click **Log Out**.



===== note =====

Please ensure to **LOGOUT** from the server, **NOT** to Shut Down the server. If you **Shut Down** the server, other people will lose their data.

===== end =====