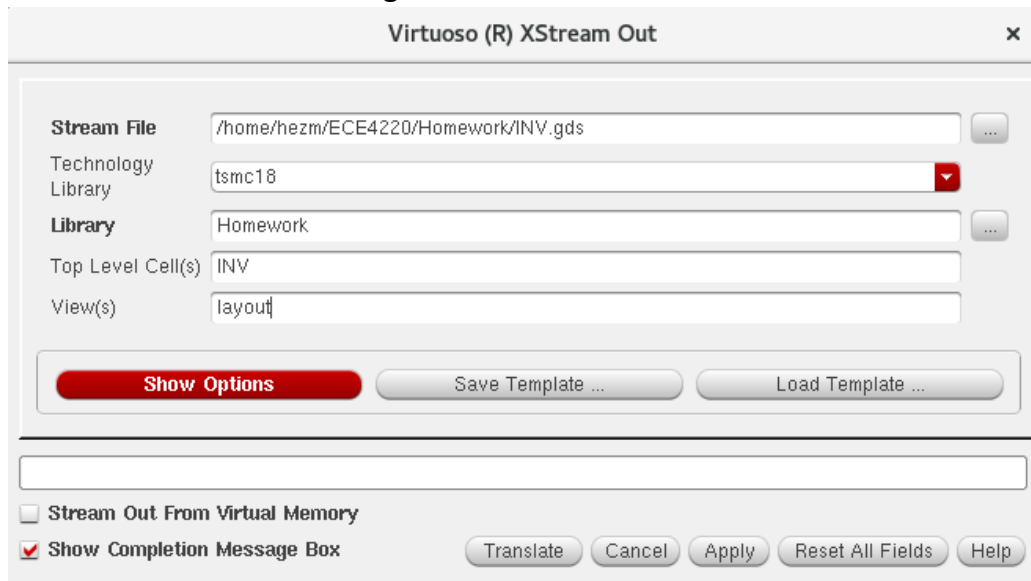


GDS File Extraction

Author: Jinhua Wang, Chenyuan Zhao

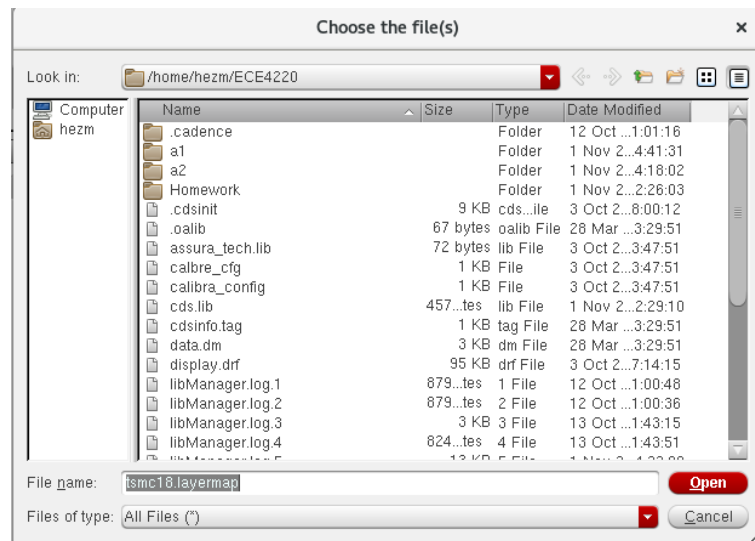
1. In this tutorial, how to extract GDS file from layout would be introduced. In CIW window, click **File** → **Export** → **Stream**. Then Stream extracting window will pop up.
2. Stream File: enter the gds file name and the path where you want to save it to (you may also browse the path)

Note: the file extension must be **.gds**



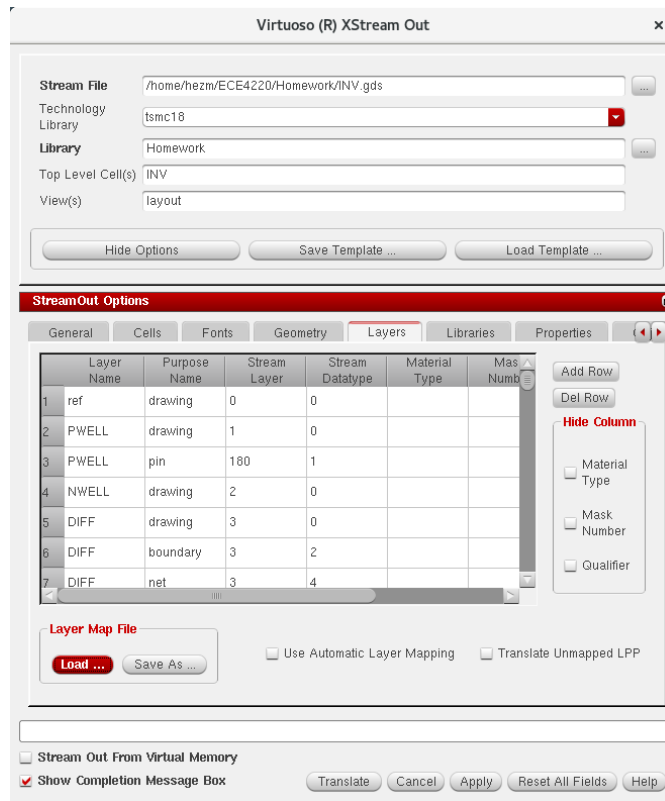
Note: Make sure the Technology is “tsmc18” since this tutorial is based on TSMC 180nm technology.

3. Click **Show Options** → **Layers** → Load to load the layer file

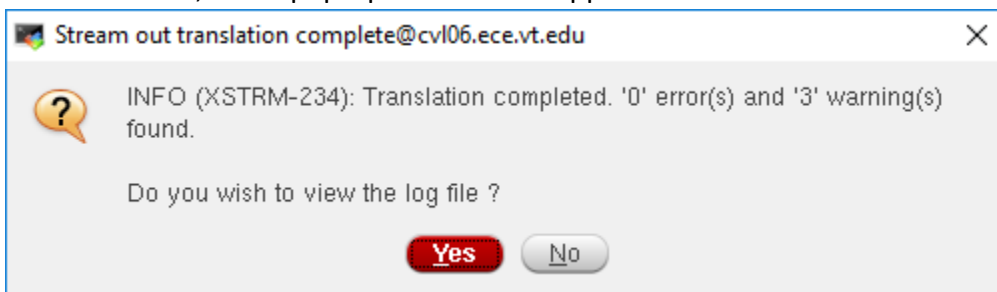


Note: if you cannot find this layermap file, talk to the TA.

4. The **Stream Out** window should look like below,



5. Click **Translate**, and a pop-up window will appear.



Make sure there are no errors.

6. After this process, the GDS file is generated.