

MobaXterm Access Tutorial

Author: Jinhua Wang

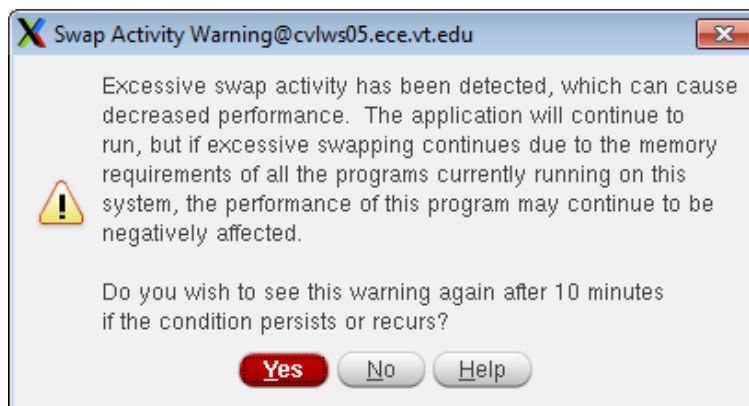
Pros and Cons about MobaXterm

Pros:

1. You can log on to the ECE sever locally with **MobaXterm**.
2. To draw the **layout**, **MobaXterm** can be a better choice than **ECE Guacamole**, especially when you have **multiple screens**. You can put the schematic on one screen and put the layout on the other one.
3. **MobaXterm** does not have the command-entering issue that often happens on **ECE Guacamole**.

Cons:

1. **MobaXterm crashes** often. Make sure to **save** your work periodically.
2. The speed of **MobaXterm** is **heavily dependent** on your **local internet speed**. It has the best performance when operating under the campus internet “eduroam”.
3. For **very long** simulations, because **MobaXterm** crashes very often, **ECE Guacamole** is a better choice, because it is much **more stable** than **MobaXterm**.
4. If you are running simulations on **MobaXterm**, and see a **warning message** shown below, it is because the programs that you are running allocate more memory than the ECE department server’s physical RAM. If you **continue** running your simulation, the simulation progress turns to be **super slow** and **very likely to crash**. When you see this warning message, simply just **change** your simulation to **ECE Guacamole** or just use **ECE Guacamole** to do simulations in the first place.



Create Your ECE Account

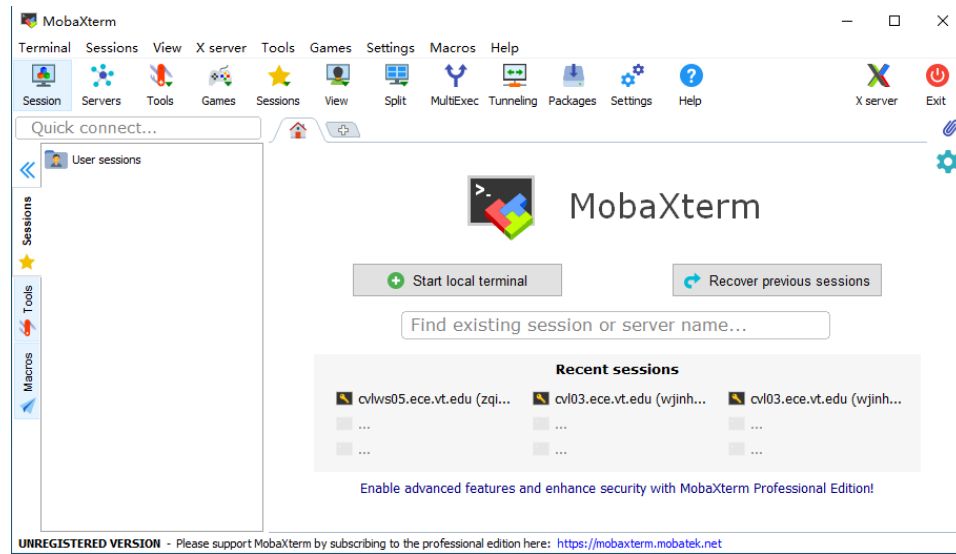
1. Open a web browser, and enter <https://computing.ece.vt.edu/accounts;>
2. Log in with your **VT PID**.
3. Click **ECE Services** under the Contents;
4. Click **Manage ECE Accounts**.
5. Enter **Your ECE account and password**.
6. Click **New**;
7. Fill in the blank fields and click **Create ECE Account!**

Download MobaXterm

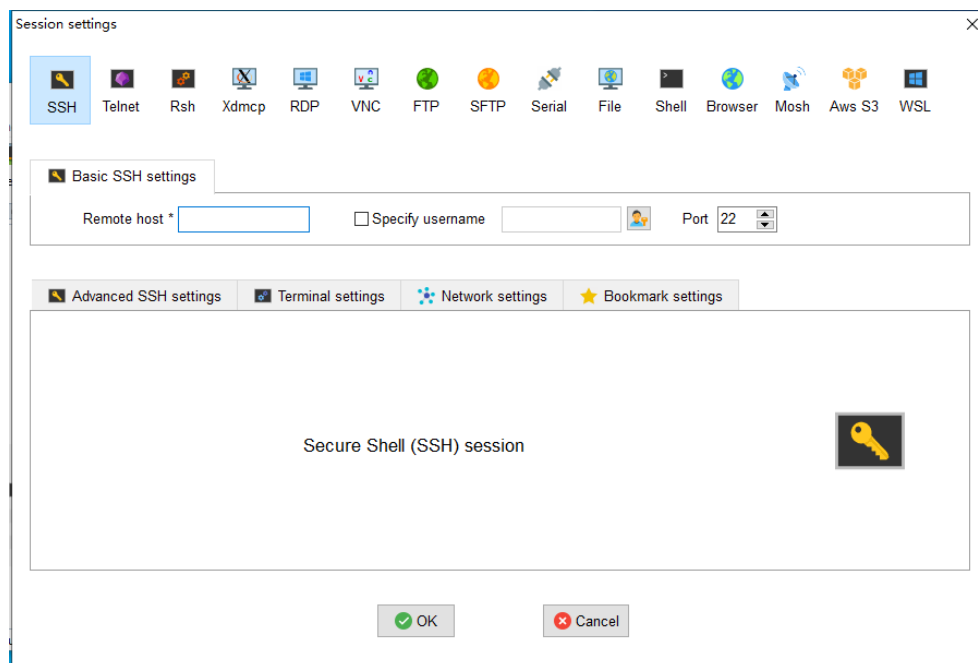
1. Go to <https://mobaxterm.mobatek.net/download.html>.
2. Select **Home Edition**, click **Download now**.
3. Select either **Portable edition** or **Installer edition**.
4. Install **MobaXterm** after it is downloaded.

Access to ECE Server

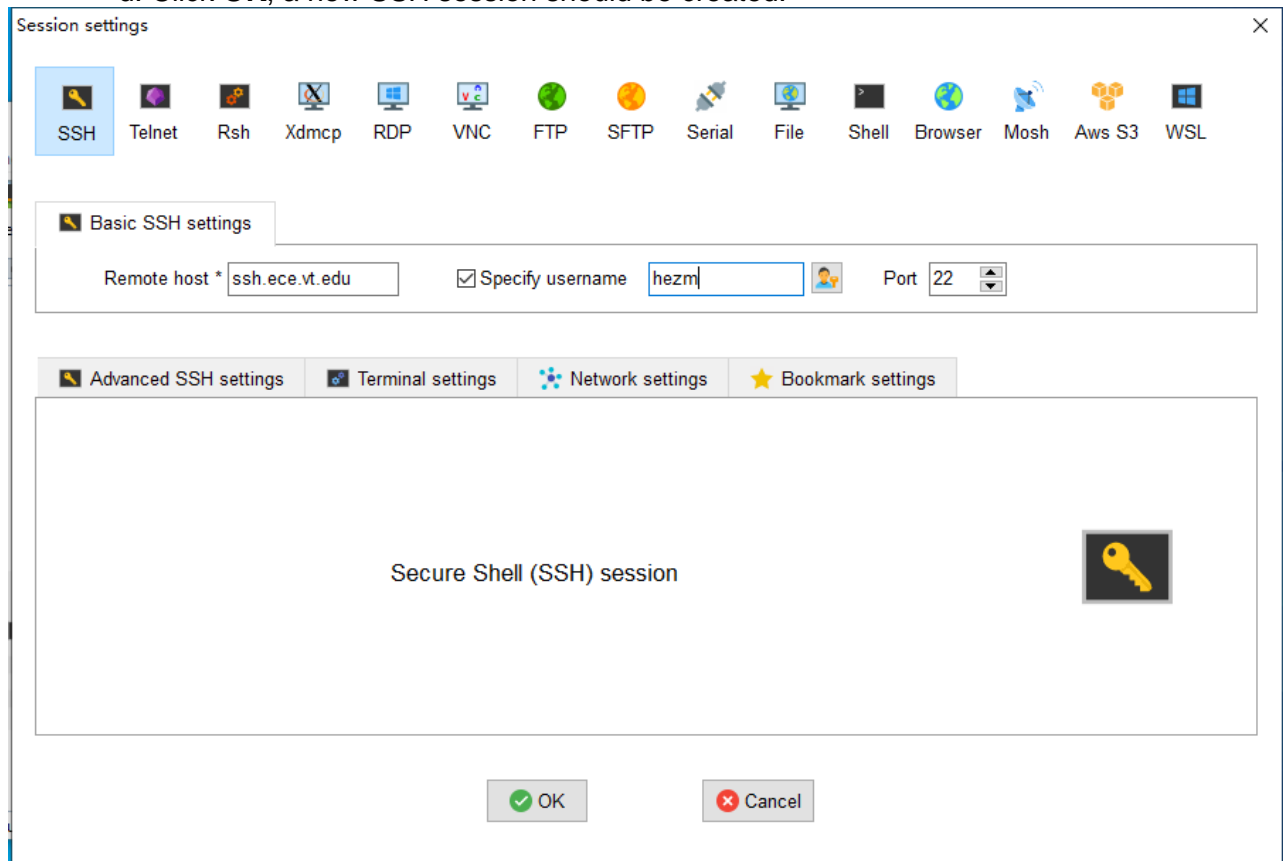
1. Open **MobaXterm**.



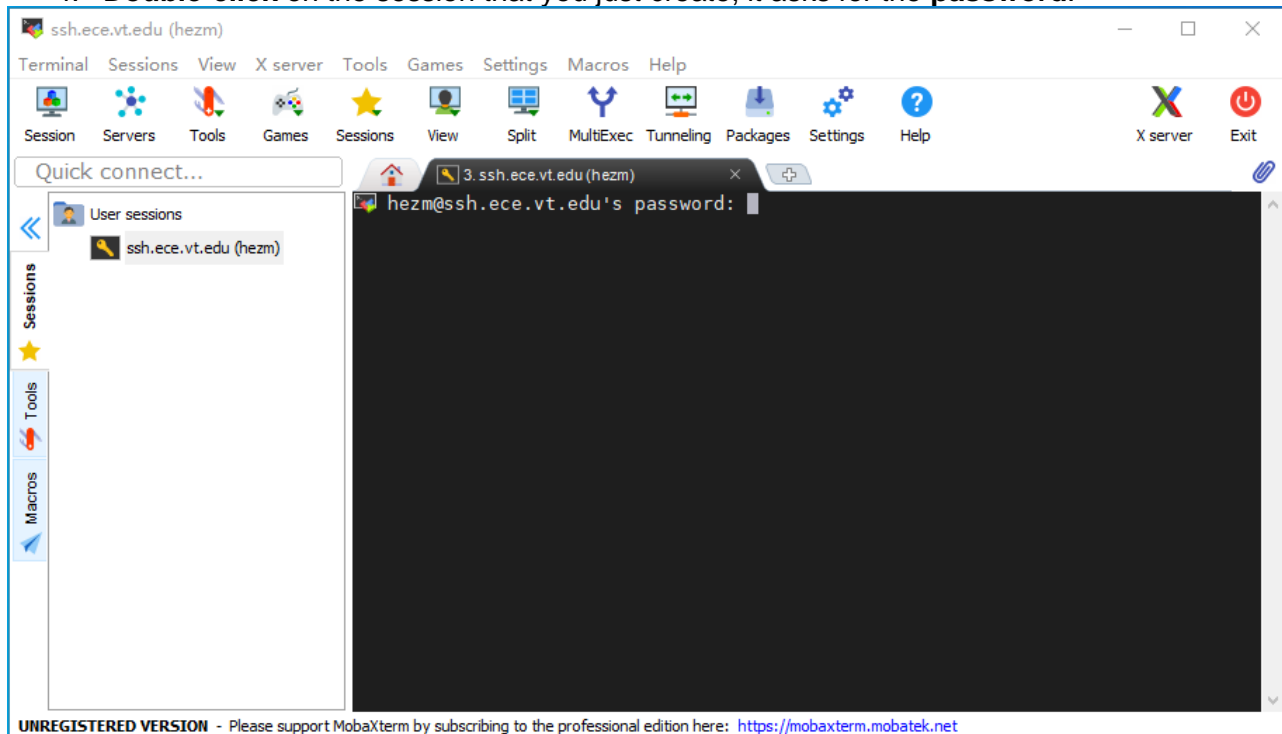
2. Go to **Session -> SSH**.



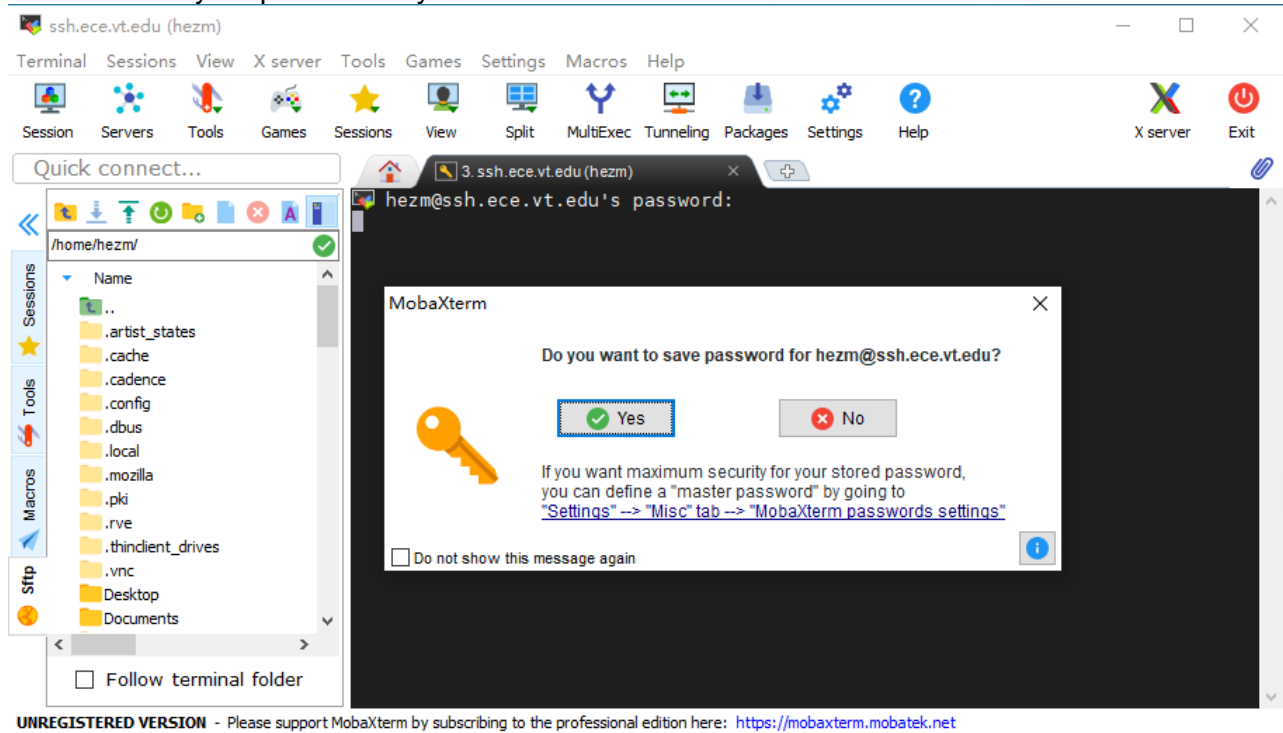
3. a. For **Remote host ***, enter **ssh.ece.vt.edu**.
b. Enable **Specify username** and enter your **ECE CVL account**.
c. **Port** should be **22**;
d. Click **OK**, a new SSH session should be created.



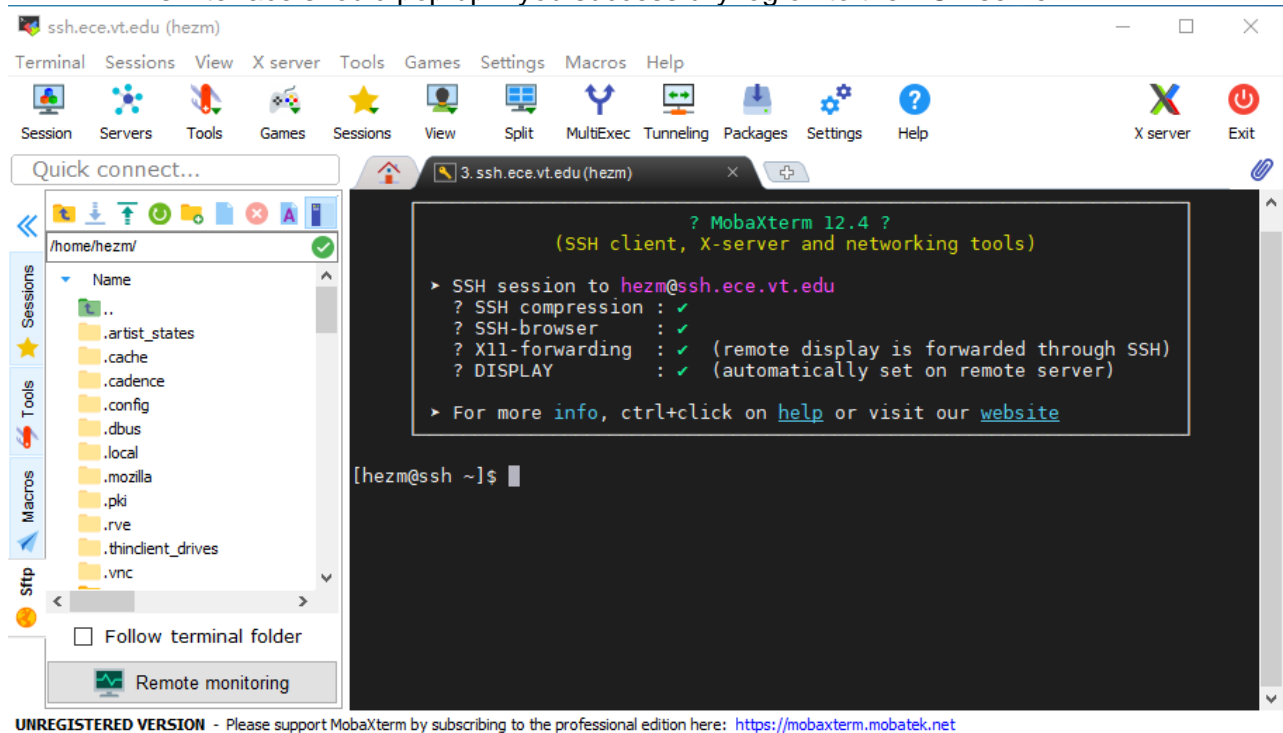
4. **Double-click** on the session that you just create, it asks for the **password**.



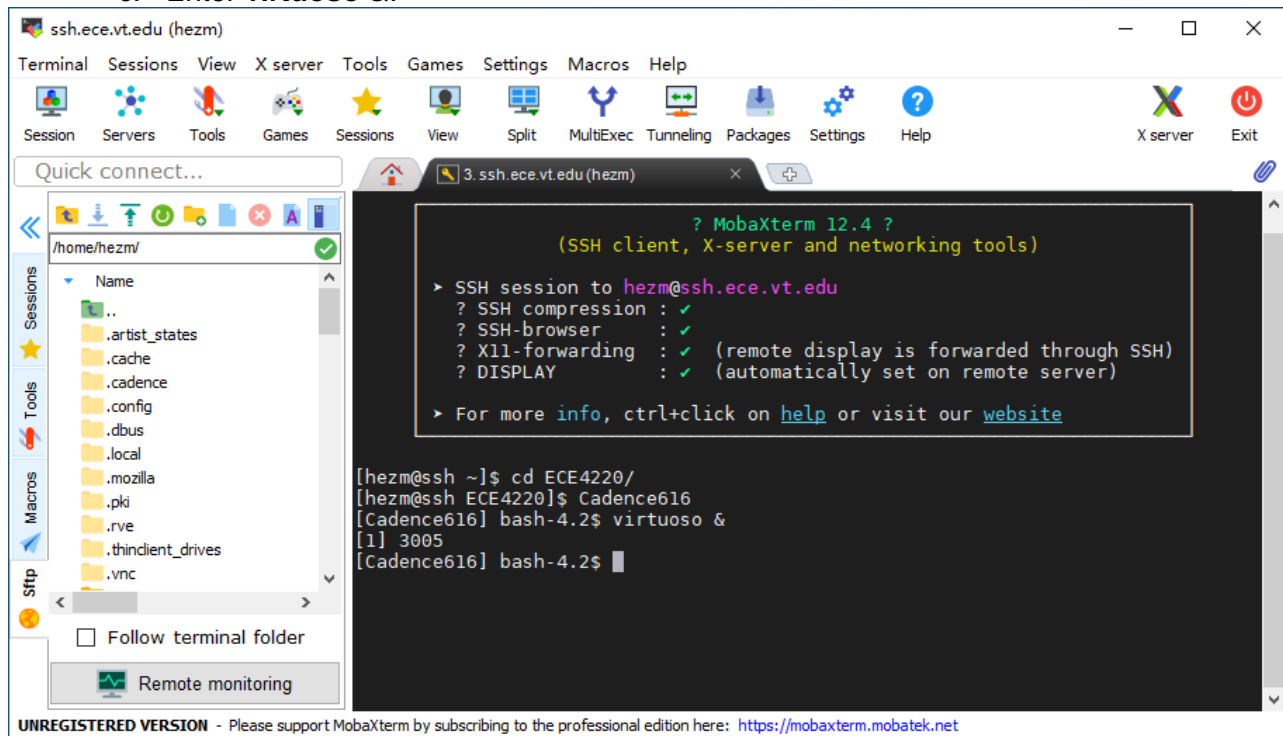
5. Enter your password. Note that this terminal **will not** show your password when you are typing. So, make sure your entering is correct.
6. **Save** your password if you want to.



7. This interface should pop up if you successfully log on to the ECE server.



8. To open **Cadence**
 - a. Navigate to your **working directory** (where the PDK is installed).
 - b. Enter **Cadence616**.
 - c. Enter **virtuoso &**.



9. The **Cadence window** should pop up.

